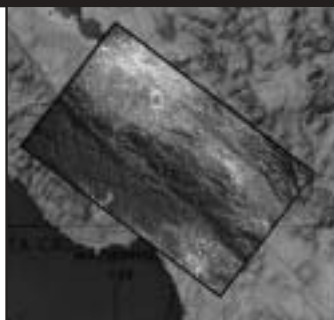
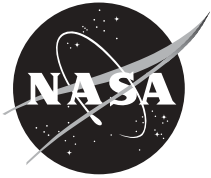




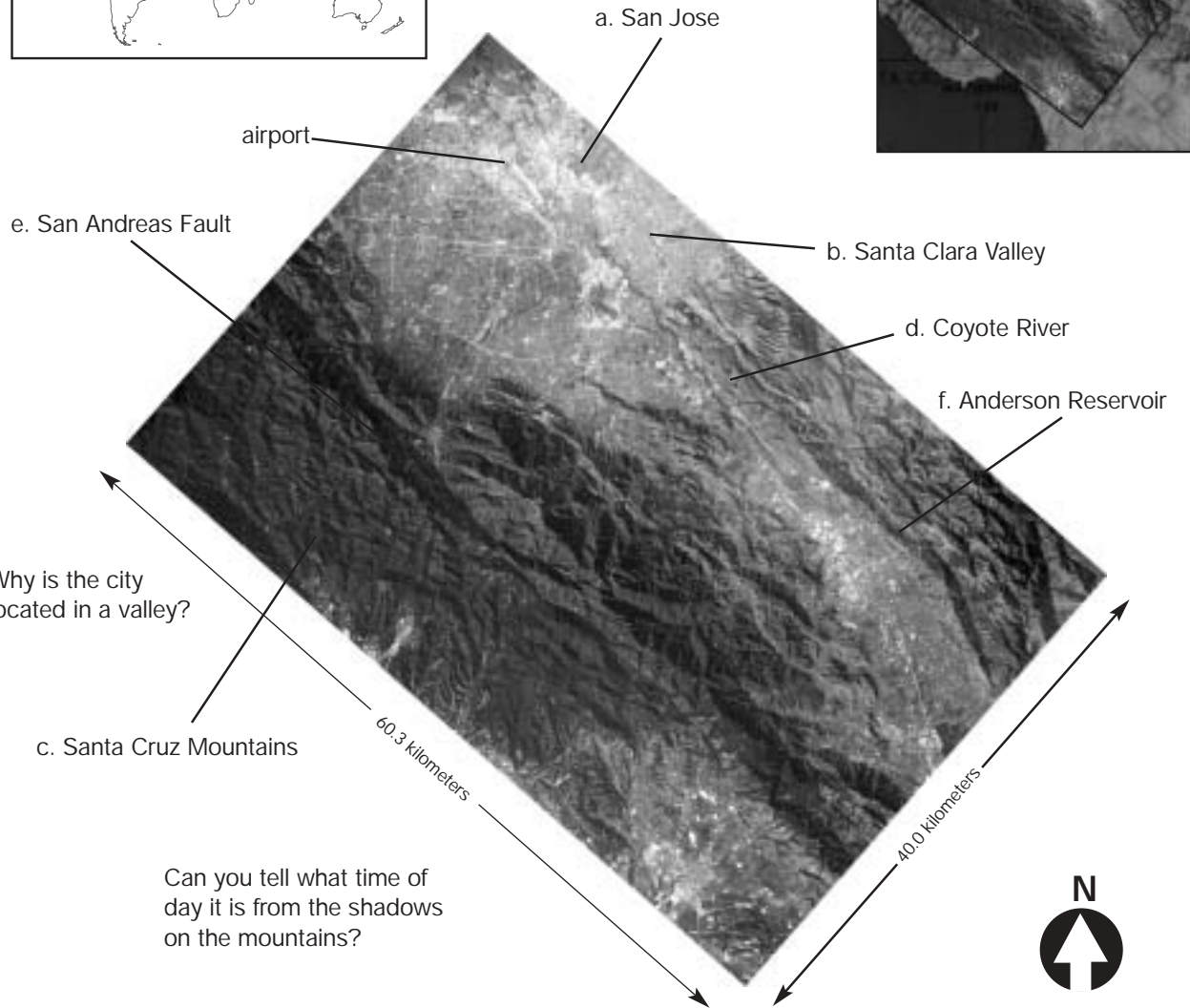
National Aeronautics and
Space Administration

San Jose, California





Latitude: 37.2° N **Longitude:** 121.9° W
Date: February 8, 2002
Image ID #: ISS004.ESC1.039234904



San Jose (a), California, is the 11th largest city in the United States with a population of 894,943 (2000). San Jose's economic development began a century ago with processing the agricultural products of the fertile Santa Clara Valley (b). However, in the last 25 years, high-tech computer-related industries have concentrated in the San Jose region, earning it the nickname Silicon Valley. Today, more and more areas of the Santa Clara Valley are being used for urban purposes.

The metamorphic and sedimentary rocks of the Santa Cruz Mountains (c) have washed down as sediments carried by rivers and streams, including Coyote River (d), to produce the rich soils of the Santa Clara Valley. This is a geologically active, earthquake-prone region. It is criss-crossed by a series of active fault lines, including the San Andreas Fault (e).

Water is very important to San Jose for agriculture, industry, and municipal purposes. The Anderson Reservoir (f), built in 1949, serves as one of a linked system of water storage lakes used to recharge groundwater and to provide the growing urban population with drinking water.

Additional information:
ISS EarthKAM images and lessons:
<http://www.earthkam.ucsd.edu>
NASA Spacelink:
<http://spacelink.nasa.gov>