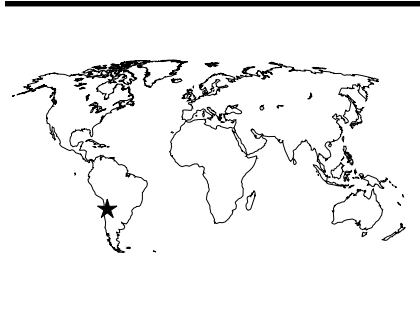




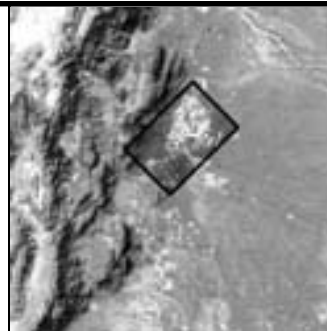
National Aeronautics and
Space Administration

Ri3 Salado, Argentina





f. smaller rivers
Why are these small rivers so bright? (Think about what the river bed might be made of.)



Latitude: 25.31 S Longitude: 64.29 W
Date: October 4, 1997
Type of Image: EarthKAM
Image ID #: STS086.ESC.08162147

g. forested, undeveloped land
Why are these areas uncultivated?

b. large agricultural fields
Why are they different colors?

a. foothills of the Andes Mountains

Cultivated fields create the main visual pattern for this image, which is located in northern Argentina at the foothills of the Andes Mountains (a). This is one of the new regions of rapid development in Argentina. The pattern of yellow-tan rectangles—large agricultural fields (b)—suggests that the fields are corporate agriculture, not small independent farms. The agriculture extends north of the Ri  Salado (c) and follows the main road north to Bolivia.

There is a finer structure on the larger fields—possibly smaller plots planted in the same crop. The fields decrease in size and change shape toward the river. The pattern of long, skinny plots radiating from the river (d) indicates that water access and river front property are high priorities, and that water control is an important regional issue. The Ri  Salado also has a reservoir (e) near one corner of the image. Several smaller rivers (f) cut across the image. The dark region to the west and northwest is mostly forested, undeveloped land (g).

d. long, skinny agricultural plots

How does the agriculture near the river differ from agriculture away from the river?

e. reservoir

c. Ri  Salado

What is the importance of water to this area?

79.33 Kilometers

118.69 Kilometers

dam



Additional information:

EarthKAM images and lessons:

<http://www.earthkam.ucsd.edu>

JSC Earth From Space image database:

<http://earth.jsc.nasa.gov>

NASA Spacelink:

<http://spacelink.nasa.gov>