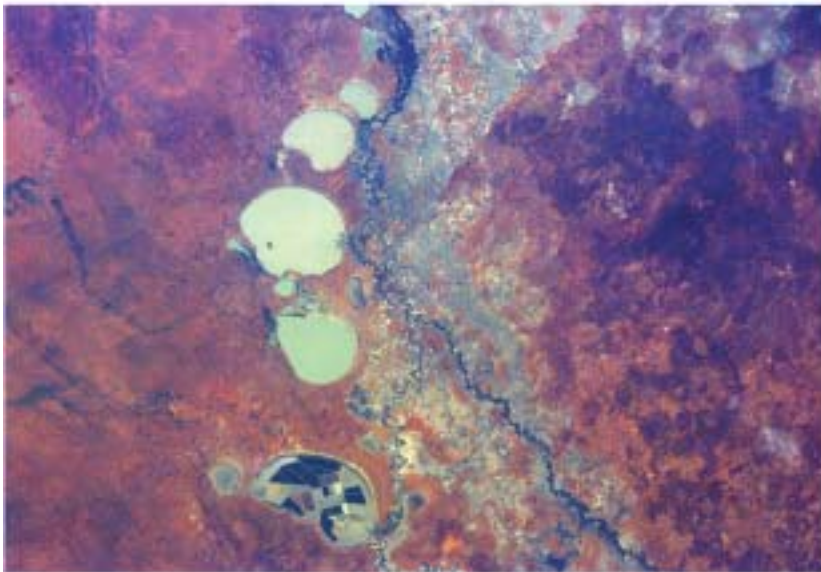
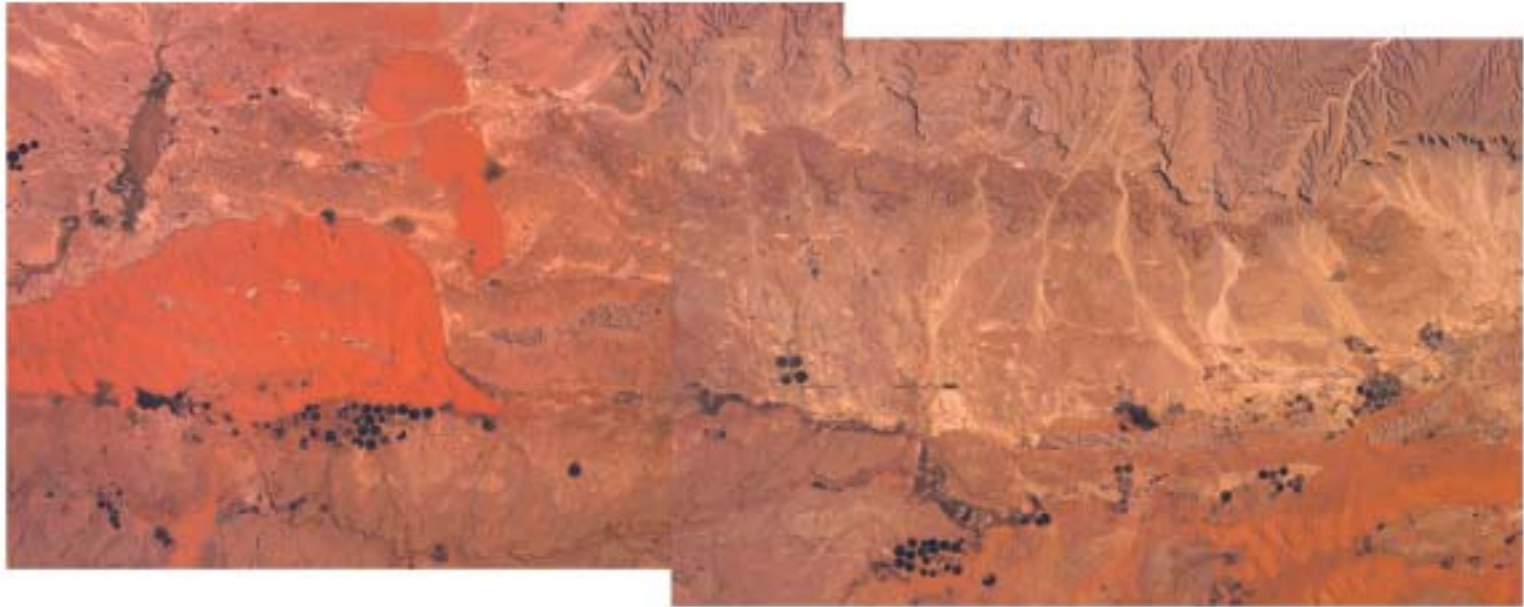


National Aeronautics and
Space Administration

Creative Agriculture in Response to Limited Water





Creative Agriculture in Response to Limited Water



Location: Saudi Arabia
Latitude: 24° N **Longitude:** 45° E
Image Dimensions: 39.4 x 94.4 km
Date: March 29, 1996
Image ID #: STS076.ESC.06214832 and STS076.ESC.06214838

Location: Darling River, Australia
Latitude: 32.44° S **Longitude:** 142.34° E
Image Dimensions: 84.2 x 126.0 km
Date: January 30, 1998
Image ID #: STS089.ESC.07182155

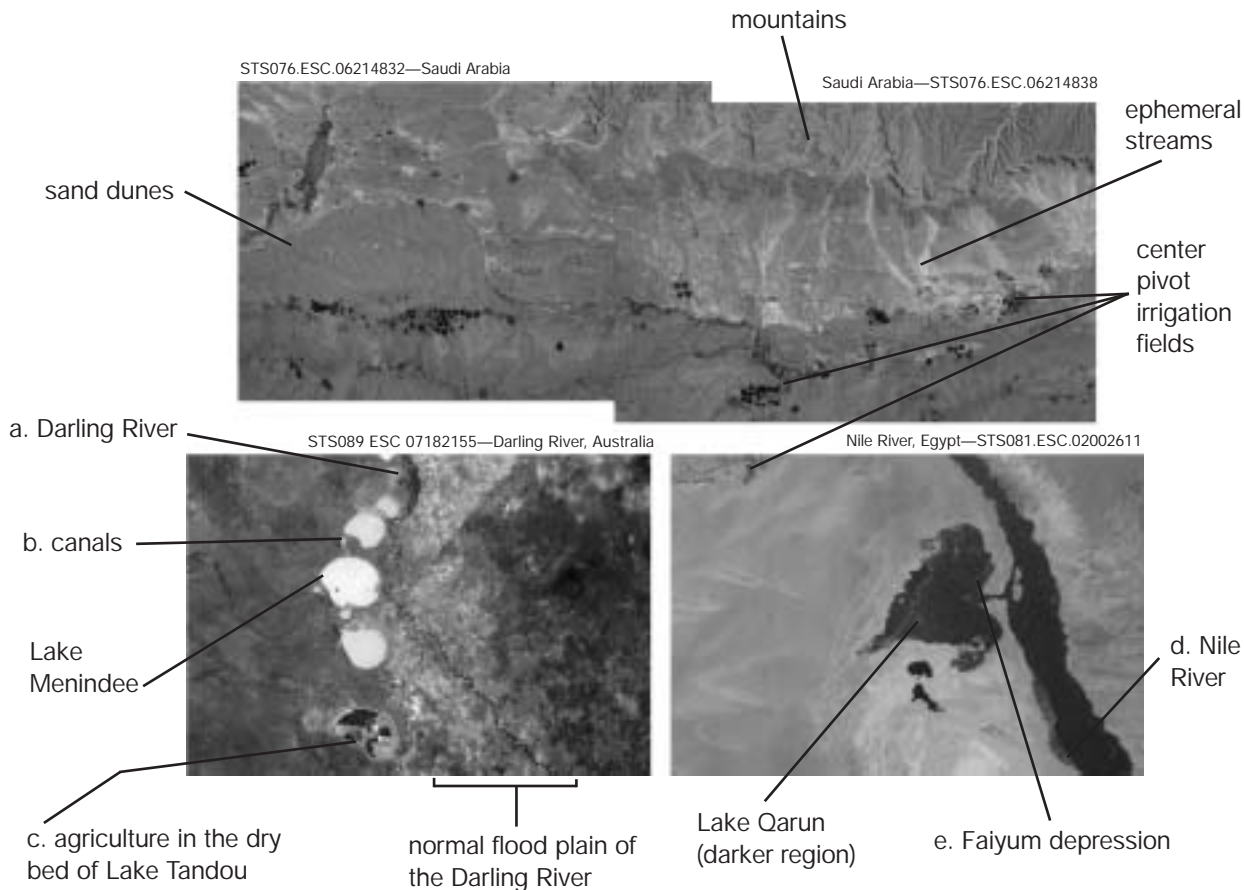
Location: Nile River, Egypt
Latitude: 29.60° N **Longitude:** 30.33° E
Image Dimensions: 138.9 x 207.8 km
Date: January 14, 1997
Image ID #: STS081.ESC.02002611

What evidence do you see of the arid conditions in these areas?

Which regions look like they've been cultivated recently? Which look older?

In desert areas where water is scarce, many ingenious ways of finding and using water have been developed to support agriculture. This composite shows several different methods.

The mosaic of two images shows patterns of agriculture in an arid valley of Saudi Arabia where aquifers have been tapped for water. The image centered on the Menindee Lakes along the Darling River (a) is in a desert region of New South Wales, Australia. A dam (not seen in the image) allows the river water to rise and flow into the lakes through a series of canals (b). The water in the lakes is used for local agriculture, such as in the rectangular fields in the old bed of Lake Tandou (c). The image of the Nile River (d) and the Faiyum depression (e) in Egypt shows one of the first regions in the world to be cultivated using irrigation. The Faiyum depression, where Nile water is diverted to support agriculture, is a naturally occurring low spot that was formerly a lake until it was drained and cultivated by Ptolemy II more than 2,000 years ago.



Additional information:
ISS EarthKAM images and lessons:
<http://www.earthkam.ucsd.edu>
NASA Spacelink:
<http://spacelink.nasa.gov>